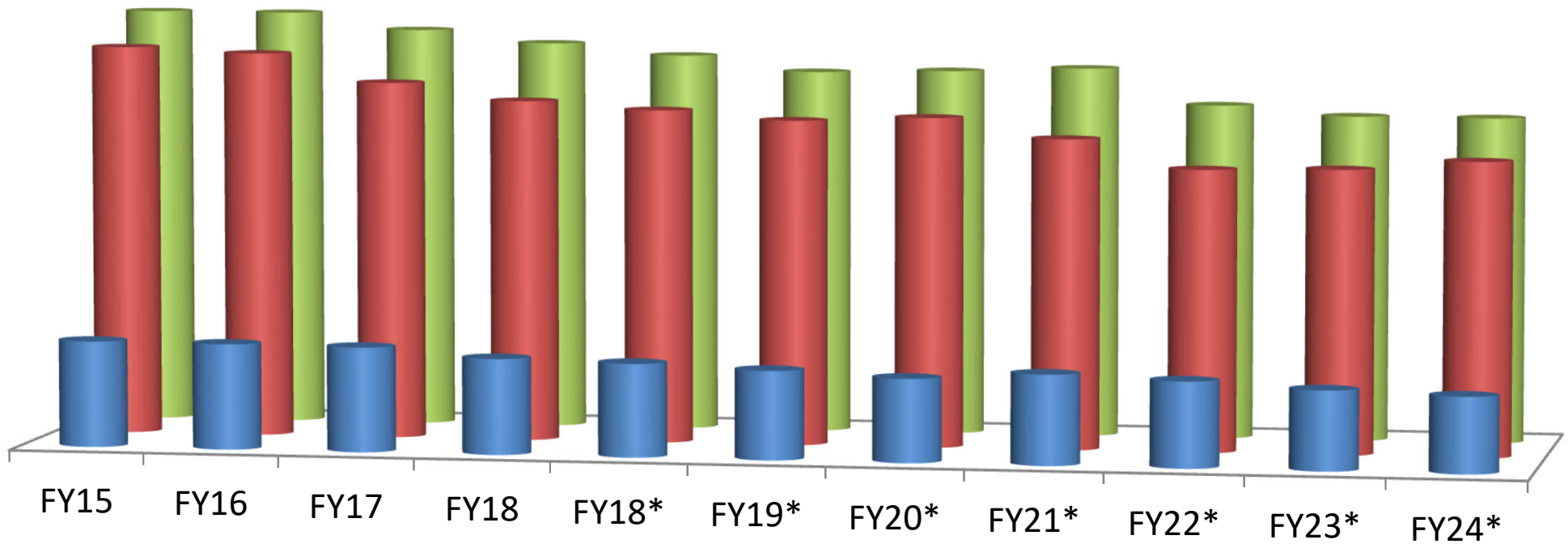


Oklahoma City Community College Ten Year Credit Student FTE by Semester



| | FY15 | FY16 | FY17 | FY18 | FY18* | FY19* | FY20* | FY21* | FY22* | FY23* | FY24* |
|----------|-------|-------|-------|-------|-------|-------|-------|-------|-------|-------|-------|
| ■ Summer | 981 | 977 | 968 | 886 | 864 | 822 | 773 | 834 | 794 | 736 | 703 |
| ■ Spring | 3,631 | 3,585 | 3,324 | 3,169 | 3,099 | 3,018 | 3,061 | 2,880 | 2,615 | 2,633 | 2,723 |
| ■ Fall | 3,896 | 3,894 | 3,742 | 3,629 | 3,527 | 3,387 | 3,410 | 3,449 | 3,117 | 3,029 | 3,029 |